

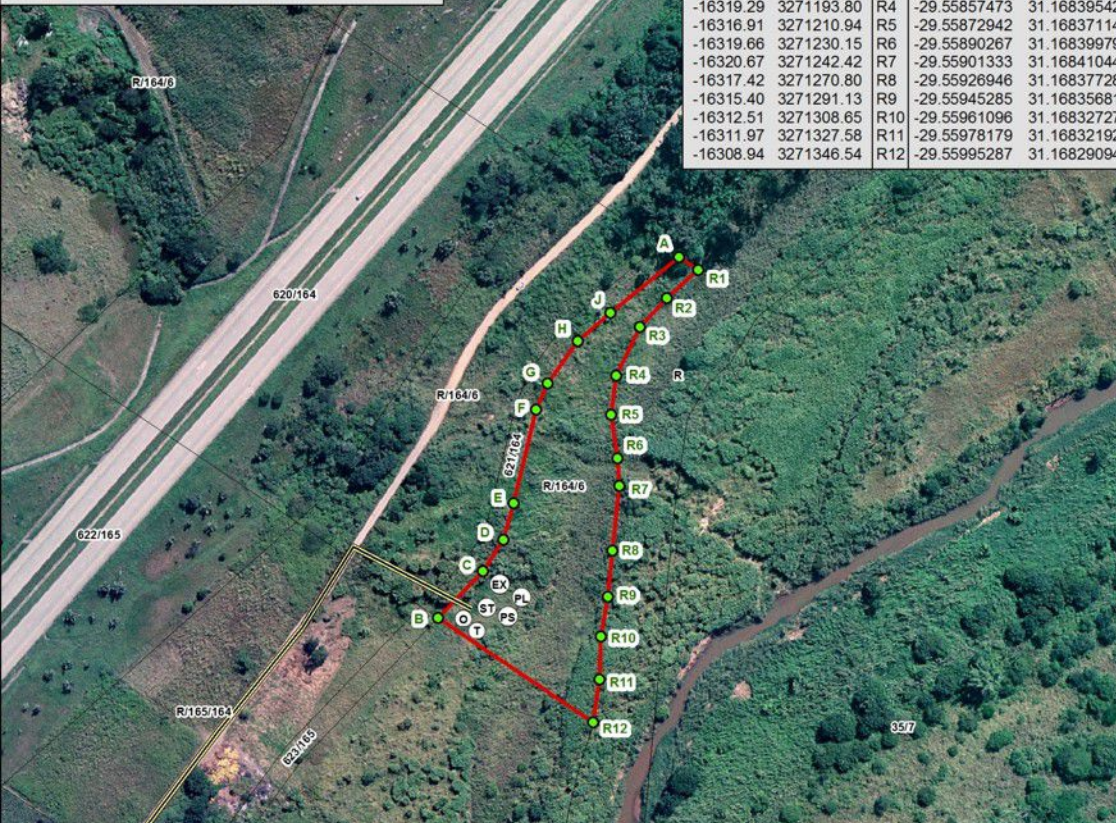
**UMHLABA
GEOMATICS**
"Turning DATA into INFORMATION"
Email: garren@umhlabageomatics.co.za
Tel: (034) 212 3185 Fax: (034) 212 1888
84 Clackson Street, PO Box 56, Durban, 3000

G:\MINING\2017\KwaNgqolosi_Sand_Mining

The application area is represented by coordinates
A R1 R2 R3 R4 R5 R6 R7 R8 R9 R10 R11 R12 B C D E F G H
and is 0.7646 Ha in extent

The approximate centre position of the application area is
31° 10' 05"E 29° 33' 32" S

Projected Co-ordinates		Geographic Co-ordinates	
Y	WG 31° X	Lat	WGS84 Long
-16346.71	3271141.44	A	-29.55810199 31.16867761
-16240.86	3271300.47	B	-29.55953815 31.16758773
-16260.58	3271279.95	C	-29.55935277 31.16779092
-16269.54	3271266.06	D	-29.55922734 31.16788318
-16274.02	3271249.94	E	-29.55908186 31.16792916
-16283.86	3271208.60	F	-29.55870878 31.16803008
-16288.95	3271197.17	G	-29.55860560 31.16808244
-16302.22	3271178.39	H	-29.55843592 31.16821909
-16316.74	3271166.18	J	-29.55832558 31.16836873
-16355.18	3271147.17	R1	-29.55815365 31.16876511
-16341.51	3271159.68	R2	-29.55826663 31.16862422
-16329.63	3271172.37	R3	-29.55838134 31.16850185
-16319.29	3271193.80	R4	-29.55857473 31.16839542
-16316.91	3271210.94	R5	-29.55872942 31.16837114
-16319.66	3271230.15	R6	-29.55890267 31.16839979
-16320.67	3271242.42	R7	-29.55901333 31.16841044
-16317.42	3271270.80	R8	-29.55926946 31.16837728
-16315.40	3271291.13	R9	-29.55945285 31.16835681
-16312.51	3271308.65	R10	-29.55961096 31.16832727
-16311.97	3271327.58	R11	-29.55978179 31.16832192
-16308.94	3271346.54	R12	-29.55995287 31.16829094



Layout alternative 1

LEGEND

- Coordinates (Green dot)
- Access Road (Yellow line)
- Application_Area (Red outline)
- Toilet (T)
- Office (O)
- Power Screen (PS)
- Excavator (EX)
- Payloader (PL)
- Stock Pile (ST)



SIGNED: Tongaat Sands (Pty) Ltd
DATE:

SIGNED: Regional Manager KwaZulu-Natal
DATE:

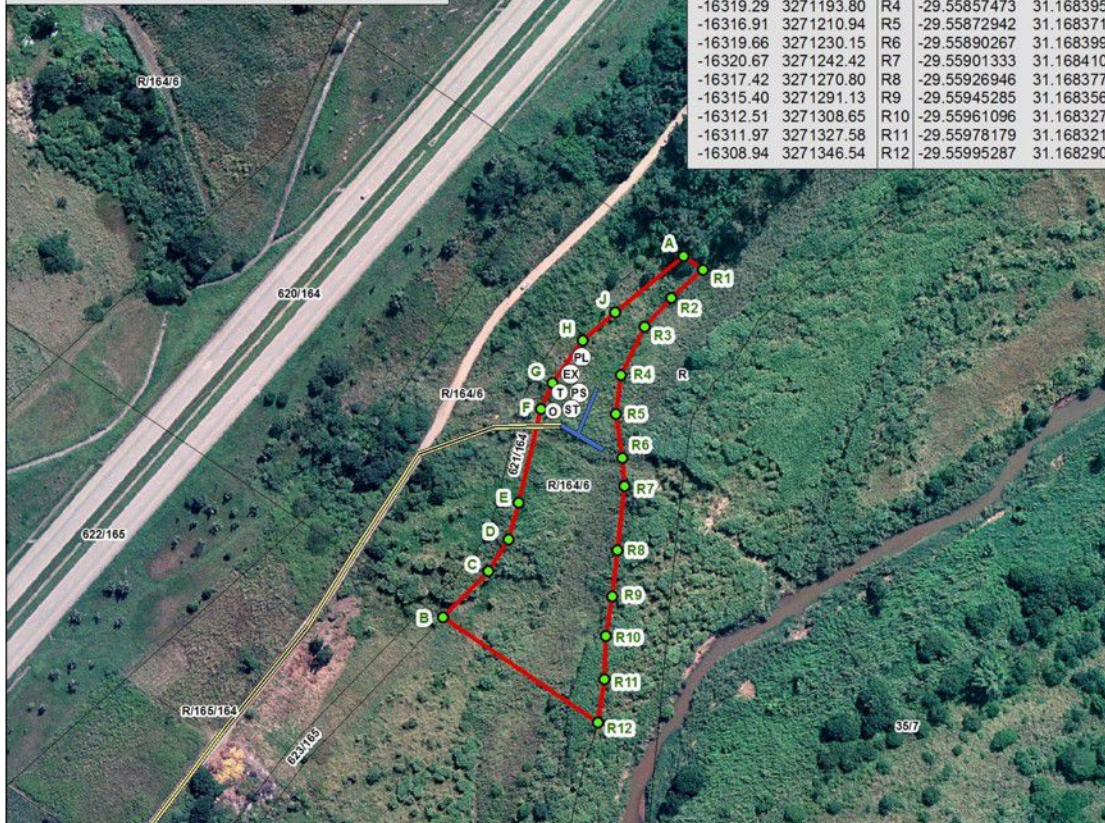
**UMHLABA
GEOMATICS**
"Turning DATA into INFORMATION"
Email: garren@umhlabageomatics.co.za
Tel: (034) 212 3185 Fax: (034) 212 1888
84 Clackson Street, PO Box 56, Durban, 3000

G:\MINING\2017\KwaNgqolosi_Sand_Mining

The application area is represented by coordinates
A R1 R2 R3 R4 R5 R6 R7 R8 R9 R10 R11 R12 B C D E F G H
and is 0.7646 Ha in extent

The approximate centre position of the application area is
31° 10' 05"E 29° 33' 32" S

Projected Co-ordinates		Geographic Co-ordinates	
Y	WG 31° X	Lat	WGS84 Long
-16346.71	3271141.44	A	-29.55810199 31.16867761
-16240.86	3271300.47	B	-29.55953815 31.16758773
-16260.58	3271279.95	C	-29.55935277 31.16779092
-16269.54	3271266.06	D	-29.55922734 31.16788318
-16274.02	3271249.94	E	-29.55908186 31.16792916
-16283.86	3271208.60	F	-29.55870878 31.16803008
-16288.95	3271197.17	G	-29.55860560 31.16808244
-16302.22	3271178.39	H	-29.55843592 31.16821909
-16316.74	3271166.18	J	-29.55832558 31.16836873
-16355.18	3271147.17	R1	-29.55815365 31.16876511
-16341.51	3271159.68	R2	-29.55826663 31.16862422
-16329.63	3271172.37	R3	-29.55838134 31.16850185
-16319.29	3271193.80	R4	-29.55857473 31.16839542
-16316.91	3271210.94	R5	-29.55872942 31.16837114
-16319.66	3271230.15	R6	-29.55890267 31.16839979
-16320.67	3271242.42	R7	-29.55901333 31.16841044
-16317.42	3271270.80	R8	-29.55926946 31.16837728
-16315.40	3271291.13	R9	-29.55945285 31.16835681
-16312.51	3271308.65	R10	-29.55961096 31.16832727
-16311.97	3271327.58	R11	-29.55978179 31.16832192
-16308.94	3271346.54	R12	-29.55995287 31.16829094



Preferred Layout

LEGEND

- Coordinates (Green dot)
- Access Road (Yellow line)
- Application_Area (Red outline)
- Toilet (T)
- Office (O)
- Power Screen (PS)
- Excavator (EX)
- Payloader (PL)
- Stock Pile (ST)
- Truck loading/turning (Blue line)



SIGNED: Tongaat Sands (Pty) Ltd
DATE:

SIGNED: Regional Manager KwaZulu-Natal
DATE: